

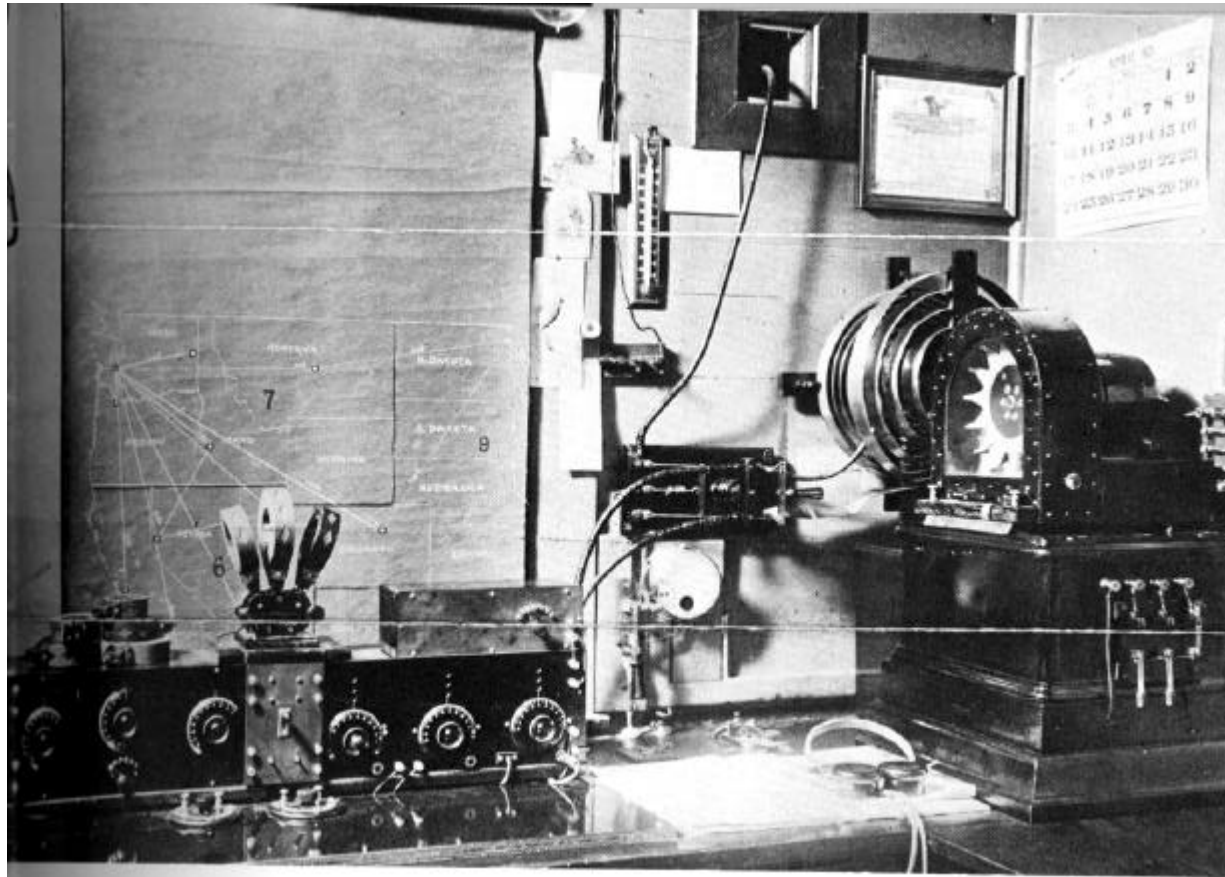
# PUGET SOUND RADIO HISTORY

A Personal View

JB Hatfield JR

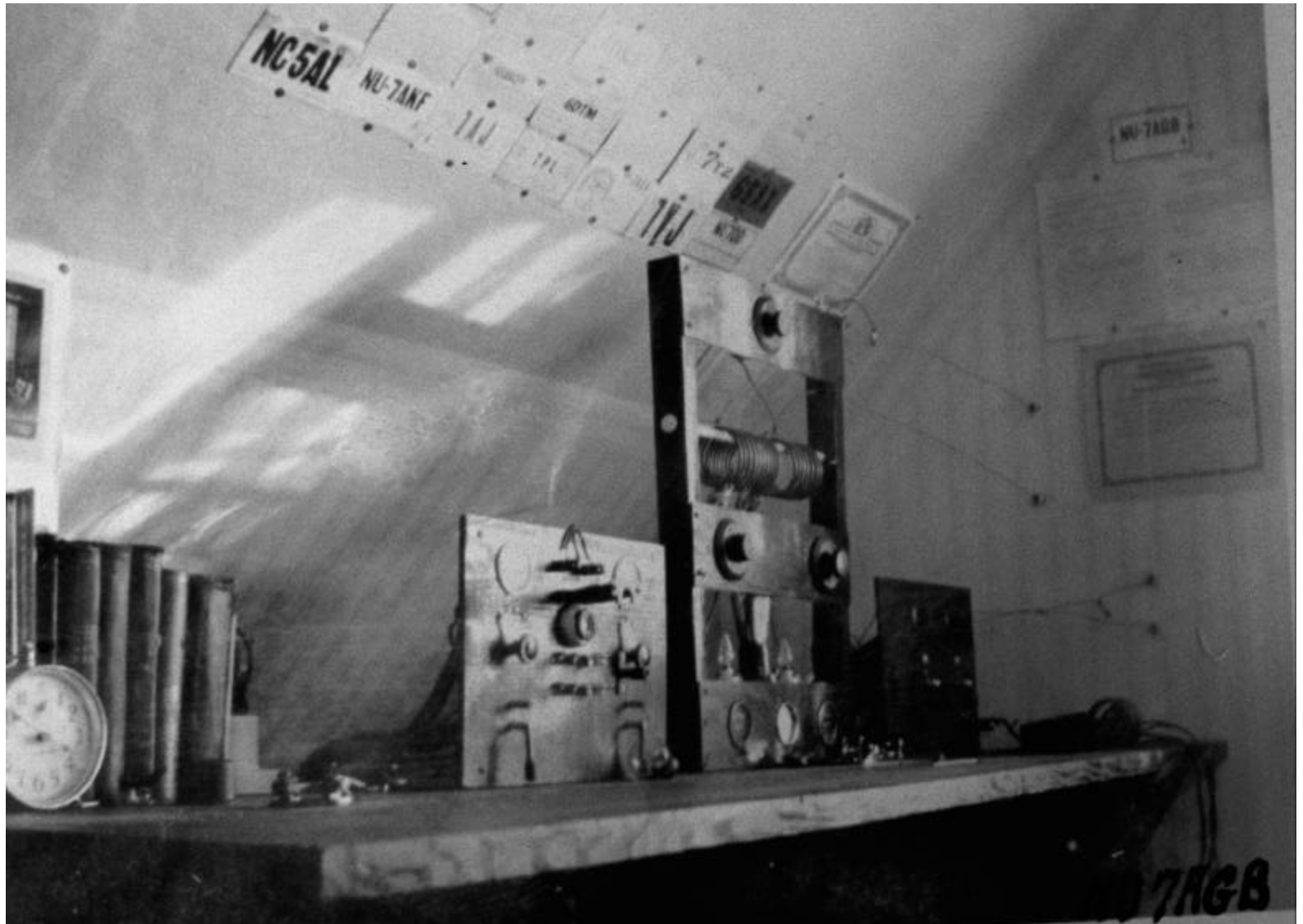
Father Ruth's original "wireless shack" (radio building) on the campus of St. Martin's in 1914.





**7YS**, an early wireless telegraph station operated by Father Sebastian Ruth at St Martin's College, Lacey, Wash. The map locates stations with which 7YS exchanged Morse code messages.

# NU7AGB JBH SR HAM SHACK



The "KGB Radio Four" wowing them from the Tacoma Ledger's station in 1922. The musicians are **Roy Marzano**, "banjoist and leader"; **Roy Beckman**, saxophone; **Anna Luke**, pianist; and **Al Stewart**, drummer. **Al Stenso** (with headphones) is seated at the controls, with unidentified announcer at left.

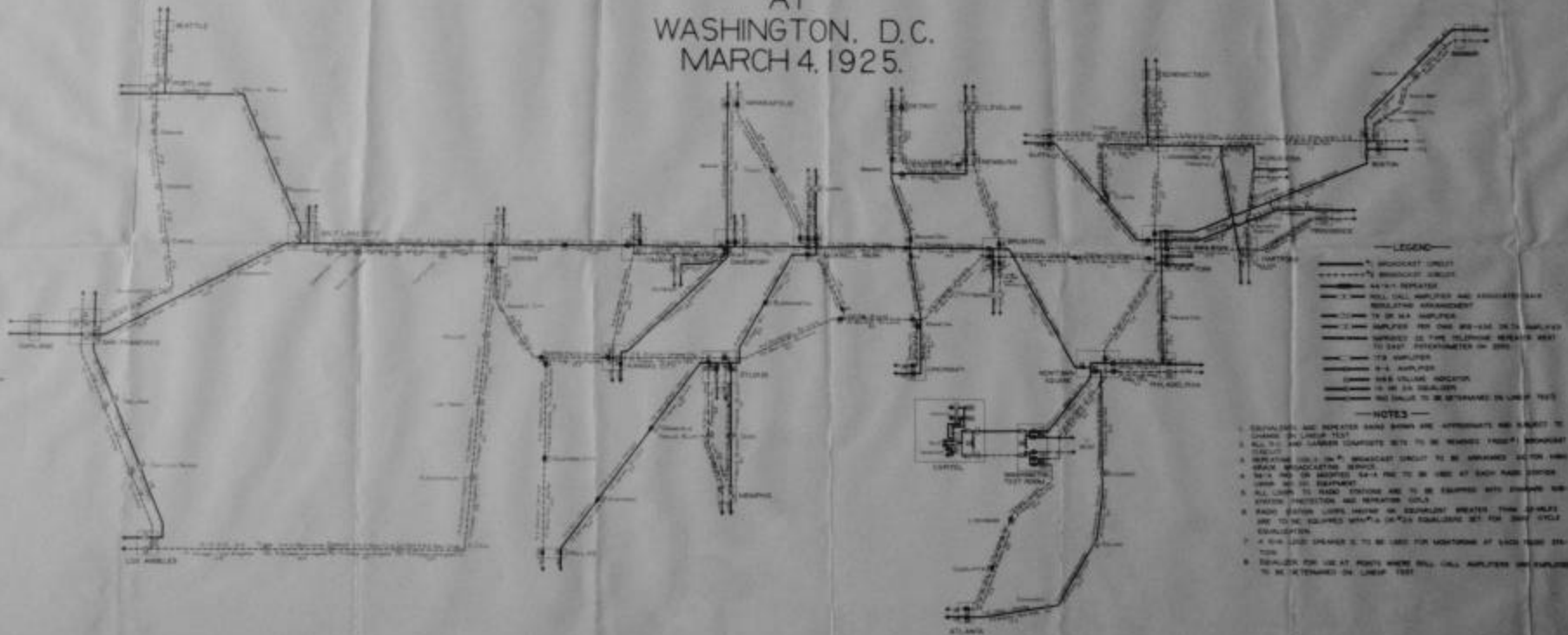
The group's hit number was "Bow-Wow Blues," for which "chief announcer Alvin Stenso furnished the bark."

Note, at left, the musicians' microphone is an ordinary telephone to which a Victrola horn has been attached. Next to it is a telegraph sounder, complete with resonating tobacco can. All radio operators were obliged to listen for and relay distress messages from ships at sea in those days. (Tacoma Public Library)



# NETWORK FOR CONNECTING RADIO BROADCASTING STATIONS

## LAYOUT FOR BROADCASTING THE PROCEEDINGS OF THE PRESIDENTIAL INAUGURATION AT WASHINGTON, D.C. MARCH 4, 1925.



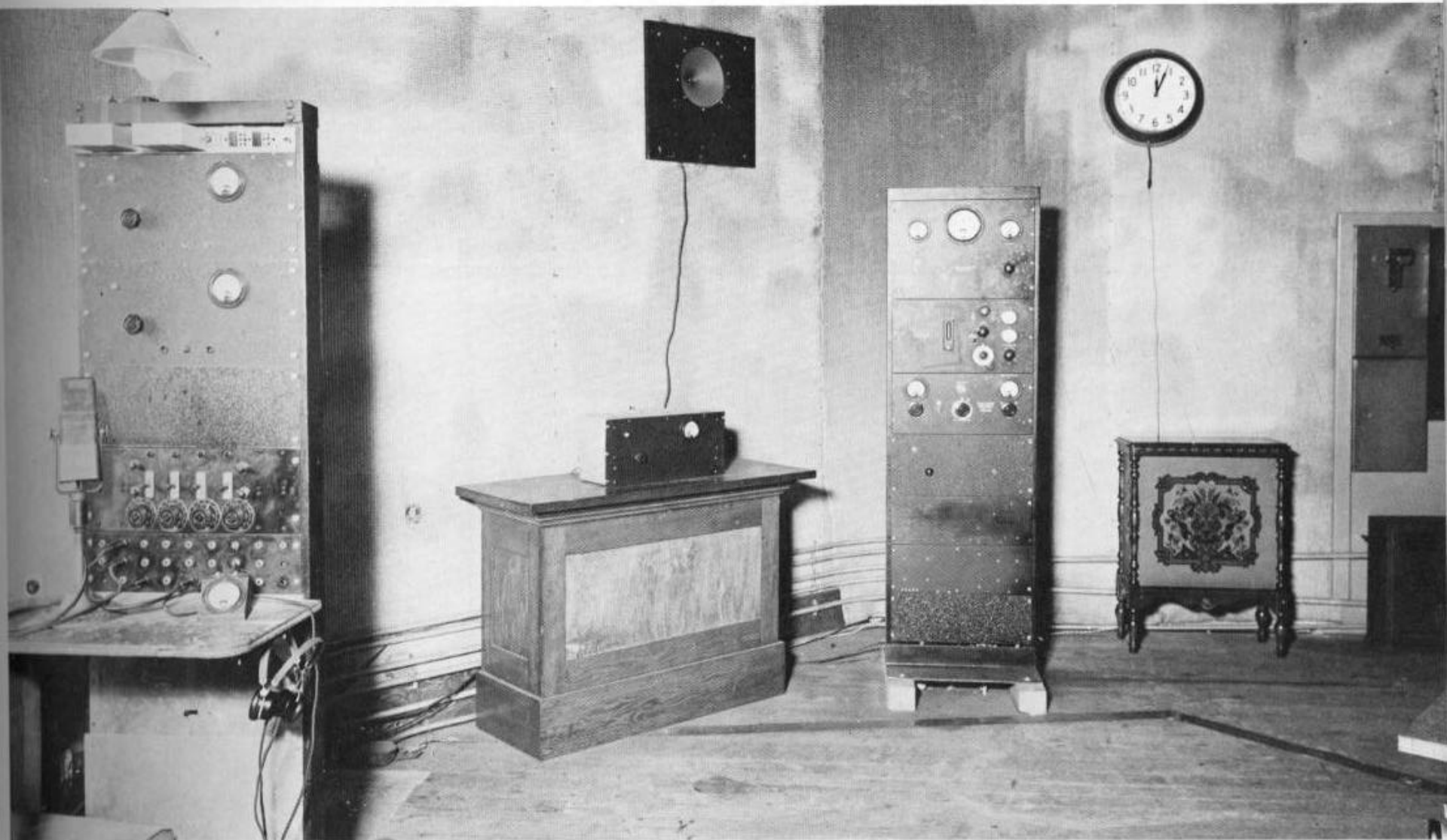
- LEGEND**
- BROADCAST CIRCUIT
  - BROADCAST CIRCUIT
  - 44-75 REPEATER
  - REL. CALL AMPLIFIER AND ASSOCIATED GEAR
  - RELAYING ARRANGEMENT
  - 75 OR 50 AMP. AMPLIFIER
  - 2 AMP. AMPLIFIER FOR ONE 500-1000 CTS. SIGNAL
  - AMPLIFIED 25 PURE SINEWAVE REPEATERS BEST TO 500 FT. PERCENTAGE IN 2000
  - 175 AMP. AMPLIFIER
  - 10-2 AMP. AMPLIFIER
  - 1000 WATT OSCILLATOR INDICATOR
  - 10 OR 25 OSCILLATOR
  - 100 SIGNALS TO BE DETERMINED ON LINE UP TEST

- NOTES**
1. EQUIPMENTS AND REPEATER GEAR SHOWN ARE APPROXIMATE AND SUBJECT TO CHANGE ON LINEUP TEST
  2. ALL 75 AND LARGER CAPACITY SETS TO BE REPEATED FROM BROADCAST CIRCUIT
  3. REPEATING GEAR TO BE BROADCAST CIRCUIT TO BE ARRANGED WITHIN 1000 FEET OF BROADCASTING STATION
  4. 75'S AND 50'S SHOULD BE 1-1 AND TO BE USED AT EACH PAID STATION
  5. 1000 WATT OSCILLATOR INDICATOR
  6. ALL LINES TO PAID STATIONS ARE TO BE EQUIPPED WITH 250000 WATT POWER TRANSDUCERS AND REPEATING GEAR
  7. RADIO STATION LINES MUST BE EQUIPPED WITH 250000 WATT TRANSDUCERS AND TO BE EQUIPPED WITH 1000 WATT OSCILLATOR SET FOR 2500 CYCLE OSCILLATION
  8. A 100 WATT SPEAKER IS TO BE USED FOR NIGHTWORK AT EACH PAID STATION
  9. SIGNALS FOR USE AT POINTS WHERE REL. CALL AMPLIFIERS ARE EMPLOYED TO BE DETERMINED ON LINEUP TEST



Seattle City Light Superintendent **James Delmage Ross** personally supervised construction of **KTW** for the First Presbyterian Church in 1922. This photo shows Ross (for whom Ross Dam is named) at work in the transmitter room, inside an ornamental dome high above the church roof. By this time (1925) partitions and a ceiling are in place. Earlier, the equipment was simply bolted to such beams and posts as passed through supporting the cupola.

**KTW** in the 1930s. The operator's "board" with announce mike and controls is in the rack at left. Patch panel connects with an attic studio (actually *below* the transmitter room) and church sanctuary, where the flamboyant Rev. Mark A. Matthews held forth with Sunday sermons.







Announce booth and record playing equipment at **KXA**, around 1931.



**KXA** transmitter room, Bigelow Building, in the early 30's.



Seattle, Washington

October 7, 1937

Dear Friend:

K

We are pleased to acknowledge your report on the reception

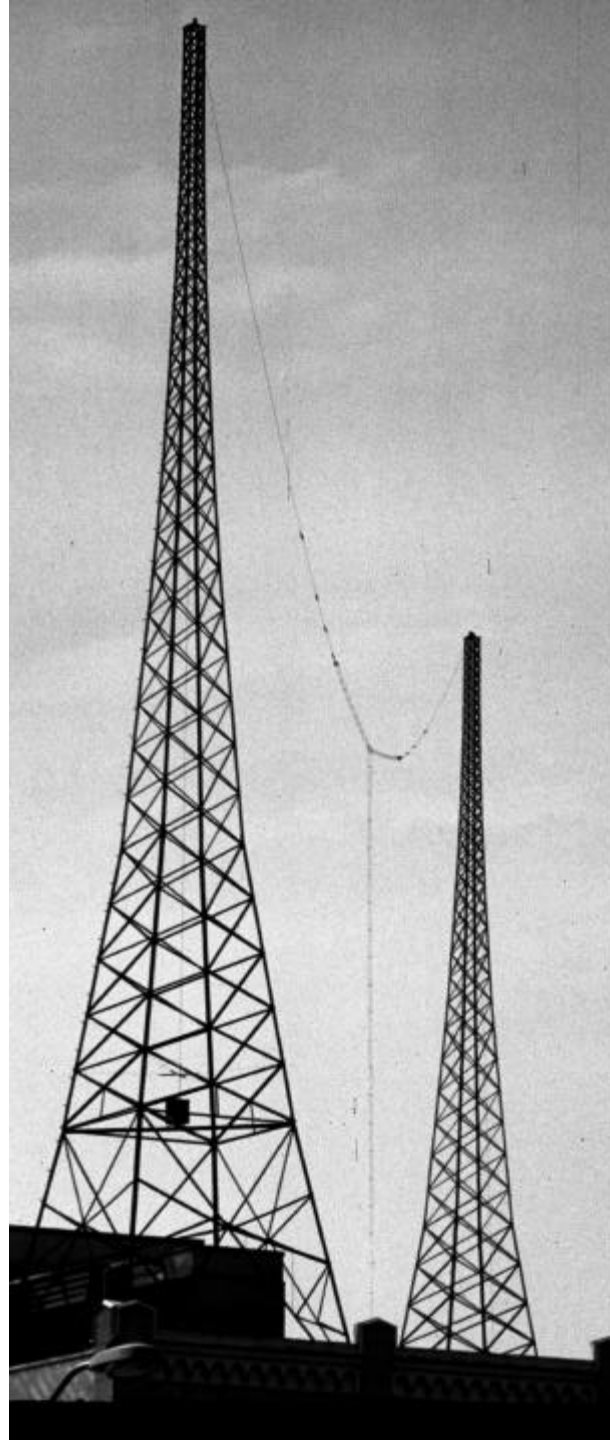
of this station on October 2, 1937 and verify same.

Yours very truly,

AMERICAN RADIO TELEPHONE COMPANY

K X A

A



**CALL LETTER INDEX**  
Broadcasting Stations of U.S.A.

Table listing call letters for broadcasting stations across the United States, organized by state or region.



**RADIO TOURS**  
*America's Latest Game*

With radio you can tour the United States, Canada and Italy more easily and more quickly than by auto, rail or airplane. Why not learn what is going on in other parts of the country? More than 200 radio stations are on the air each day offering programs of local color but of wide interest. Don't be satisfied with nearby stations—reach out for your radio enjoyment. You have the whole nation to choose from plus Canada and Mexico. What will it be tonight—Hollywood, Wall Street, Sports in New York? You will find more excitement on the radio than you ever dreamed. Check off stations on the map as you get them.

**KUNNINGHAM Radiotron**

**A TESTING YARDSTICK FOR YOUR RADIO**

Test your radio with the following yardstick. Measure the reception of the following stations. The number of stations received is a measure of the quality of your set. The number of stations received is a measure of the quality of your set. The number of stations received is a measure of the quality of your set.

**STATION LIST**  
A list of radio stations and their call letters, organized by state or region.

**KILOCYCLE INDEX**  
Broadcasting Stations

Table listing radio stations and their corresponding kilocycle frequencies, organized by state or region.

# Now! NBC doubles its Network Program Service in Seattle

*KJR of the new Pacific Coast BLUE Network*  
*KOMO of the Pacific Coast RED Network*

*All facilities of NBC's great Coast-to-Coast Red and Blue Networks  
now available on a full 16-hour service—Increases quality—Affords greater  
variety of programs—Makes your radio entertainment finer in every way.*

**NBC BRINGS YOU  
THE ROSE BOWL GAME!**

*Started in Southern Markets!*

*Tune in KJR of the Blue Network*

*Starting on our Pacific Coast Blue Network  
and continuing for more to coast than of its  
and programs, NBC starts 1936 off with a bang.*

*For the star description of the facts for the  
entire national football championship—rather  
than some of the year—will be broadcast over  
the NBC Blue Network.*

*The country's most famous sports writers, com-  
mentators and announcers will bring the game to  
NBC listeners in real, step-by-step reports.  
Follow the ball with NBC!*

**R**ADIO listeners and advertisers of the  
entire Seattle area can now tune in  
their favorite local stations with the cer-  
tainty of an even wider selection of the  
finest programs on the air.

Effective January 1st, 1936, through its  
two stations associated with the National  
Broadcasting Company, Seattle's radio  
service and enjoyment will be doubled.  
These splendid stations insure your get-

ting the last word in service, reception,  
programs. Every resource of the National  
Broadcasting Company is in actual opera-  
tion, *doubled* by the linking up of these  
famous networks, Coast-to-Coast.

**TUNE IN—HEAR FOR YOURSELF!**

**KJR** of the Pacific Coast Blue Network  
**KOMO** of the Pacific Coast Red Network

*Watch your local newspaper for hours of the NBC Feature Programs*

**NATIONAL BROADCASTING CO., INC.**

A RADIO CORPORATION OF AMERICA—SUBSIDIARY • NEW YORK • CHICAGO • SAN FRANCISCO



(University of Washington)

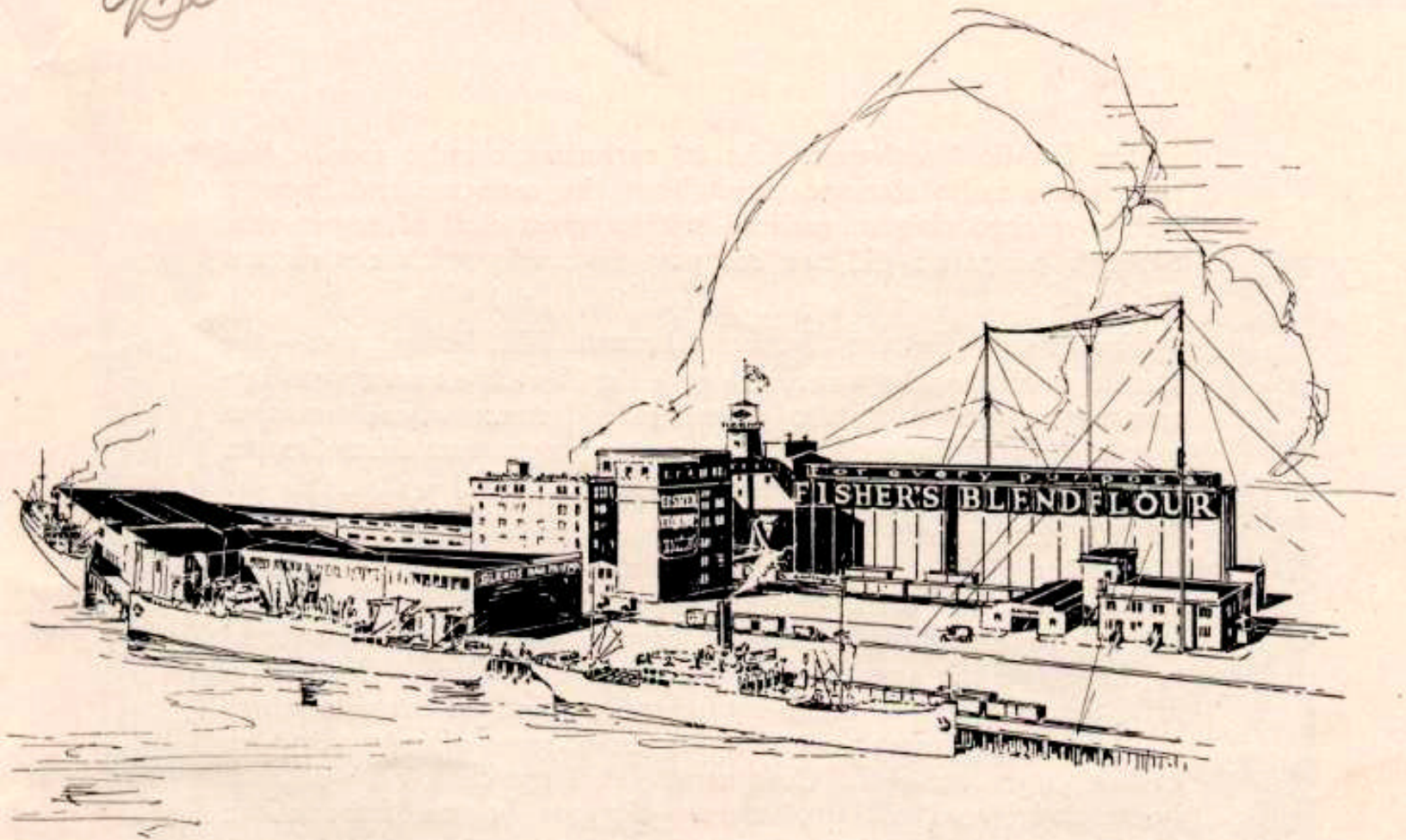
**Chet Huntley**, future TV newsman, was a poorly paid announcer for **KPCB**, Seattle, in 1934. Here he produces a one-man low-budget "opera broadcast" using phonograph albums, sound effect records of applause and the orchestra's tuning up, and his own commentary.





"Aunt Vivian" (**Elise Olmstead**) broadcasting one of her famous bedtime stories for children. Legend maintains the tales actually were code messages for her husband's far-flung network of rum-runners.

*Beck*



**K O M O**



#### SCENES AT K O M O POST-INTELLIGENCER STUDIO

*Members of the Post-Intelligencer staff before the microphone in K O M O's special studio in the P.-I. Building.*

*Upper left: Prudence Penny (Bernice Redington) telling the fair listeners "What to Prepare for Dinner"*

*Upper right: Sunshine (Doc Wilson) and Sparky (Don Milligan) collecting over K O M O for the annual P.-I. Christmas Cheer Fund.*

*Right center: Walter Rue, radio editor of the P.-I., giving some hot news just off the wire.*

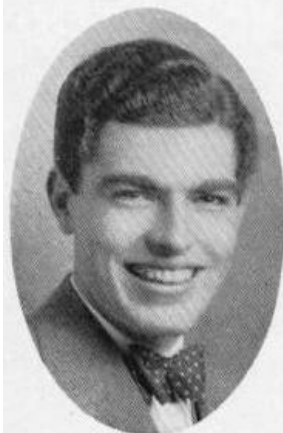
*Lower left: Art Chamberlin telling about the day's ball game.*

*Lower right: Willard Coghlin giving the P.-I. late news flashes.*



#### WEST COAST THEATRE FOLKS

*Every Friday night a large crowd of theatre folks—musicians, comedians, singers and other entertainers—gather in K O M O's special studio "back stage" at the Fifth Avenue theatre for the weekly West Coast Theatres' radio frolic. Seated at the piano is Hermie King, master of ceremonies, and in front of him, seated on the floor, Jim Clemmer, manager of the Fifth Avenue Theatre.*



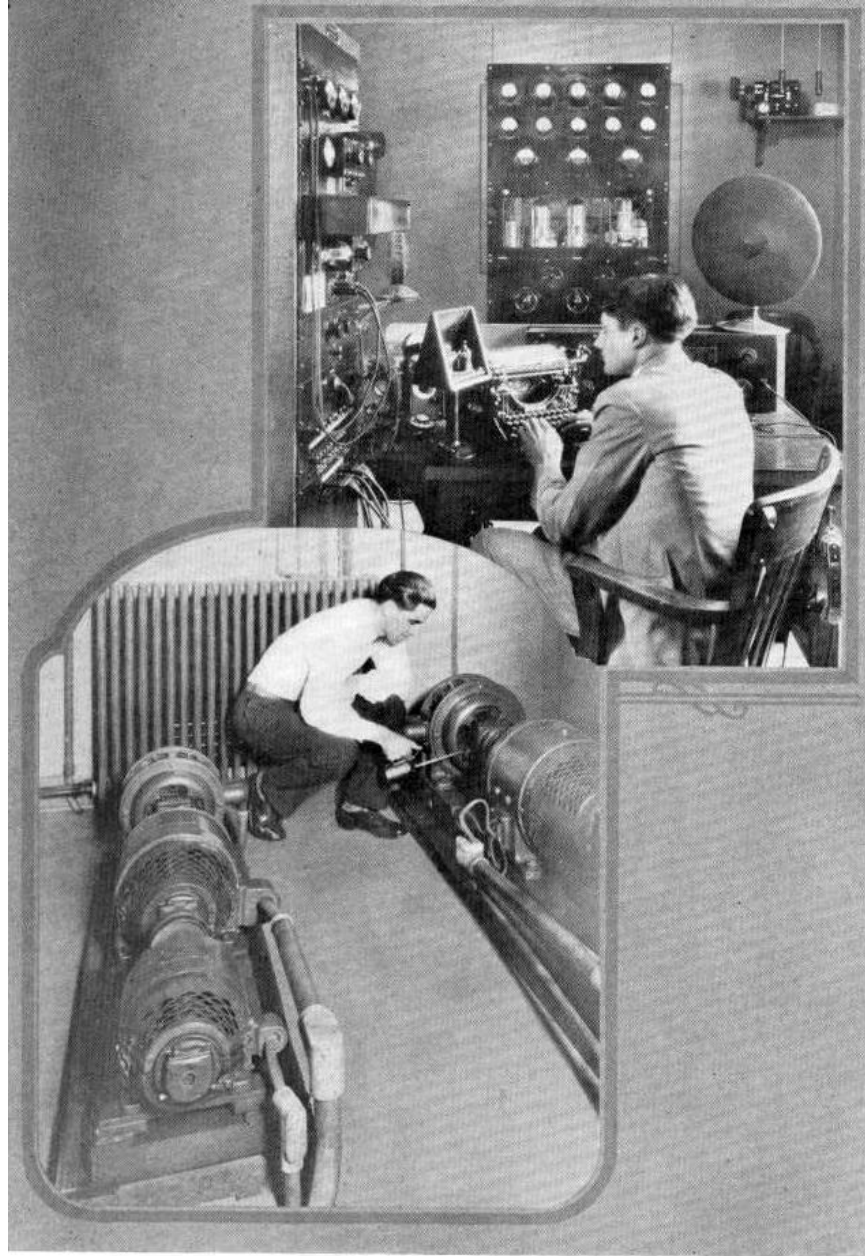
*Joe Roberts  
West Coast Theatres,  
Announcer*



TECHNICAL STAFF—REMOTE CONTROL TRUCK

*Upper: K O M O's technical staff. Left to right—Tom Rewak, F. J. Brott, chief engineer; Earl Irvine, J. A. Johnson, F. B. Mossman, R. B. Smith, Robert Flagler.*

*Lower: When local programs originate outside of K O M O's studios, the remote control truck is used.*



#### SCENES AT K O M O's TRANSMITTER

*Upper: An operator on duty at K O M O's transmitter plant is required to watch the frequency, power and modulation of his station and in addition maintain a constant watch for distress signals from ships at sea and telegraphic communication with the National Broadcasting Company operators.*

*Lower: 4,000-volt power plant supplying K O M O's power.*





### 150 WEEKS ON KOMO-KTCL

*Warren Anderson's Radio Orchestra claims the record of the longest run of any radio orchestra in the West, if not in the entire country. Starting shortly after KOMO's predecessor, KTCL, was licensed, this orchestra has broadcast every evening for nearly three years. April 6, 1928, marked its 150th consecutive appearance over KOMO and its predecessor, KTCL. Left to right, standing: Warren Anderson, director; Jack Wollenschlager, trumpet; Bill Merrieweather, trombone; C. P. Puck, bass. Seated: Helene Hill, pianist; Richard Cook, banjo; Orland Ogden, alto saxophone; Lowell Pershall, tenor saxophone.*





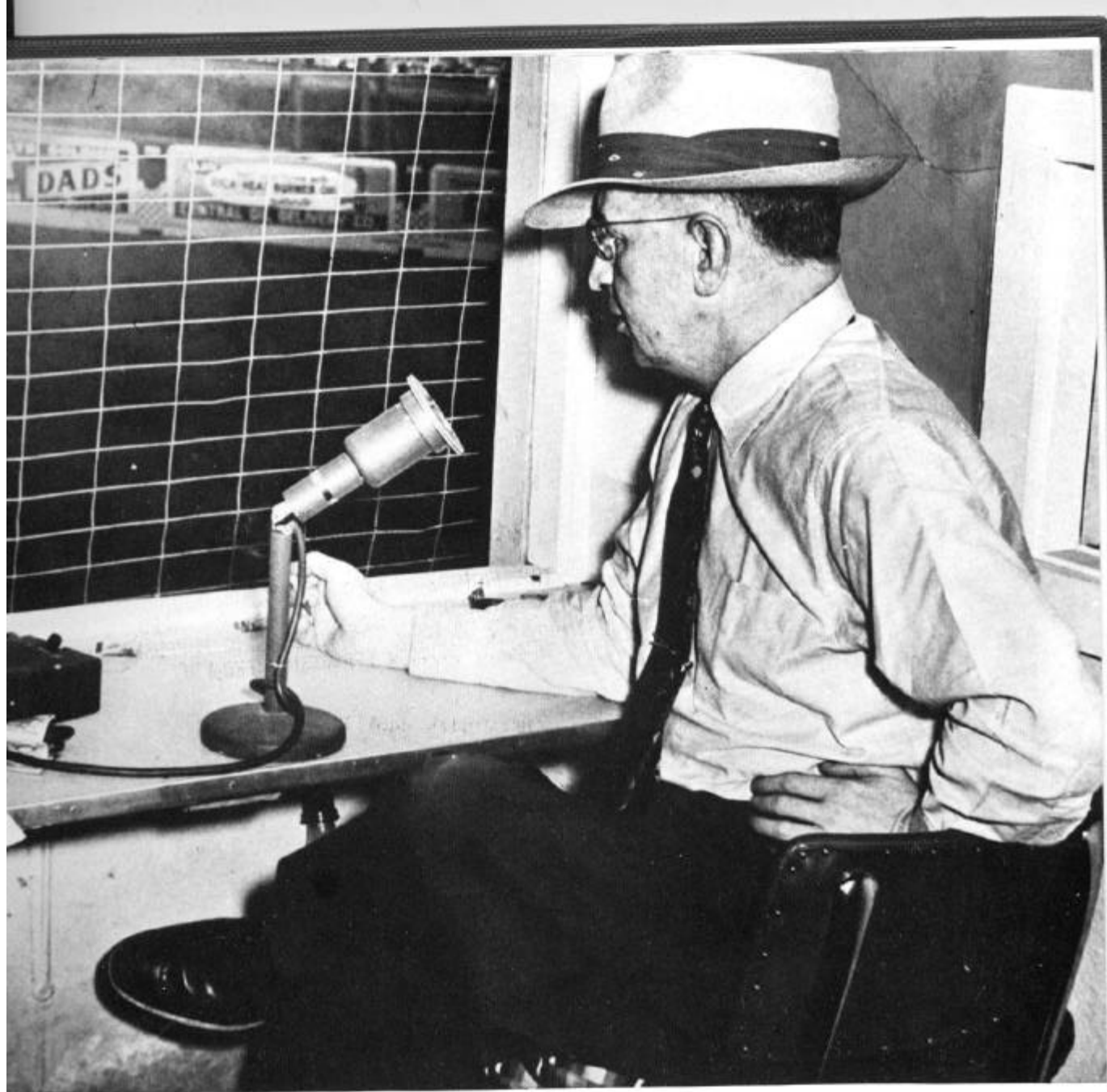
MRS. WILLOCK—A. E. DOME—JOHN HESSEMER

*The largest physical culture class in the Pacific Northwest is K O M O's radio class, which gathers each week-day morning in numerous homes and schoolhouses for exercises conducted by the Seattle Y. M. C. A. in co-operation with Totem Broadcasters. Left to right: Mrs. Willock, A. E. Dome and John Hessemer.*





(Seattle Historical Society)  
Studio "B," one of four deluxe studios built for **KOMO-KJR's** combined operation on the seventh floor of the Skinner Building in Seattle, July, 1933. The construction was something marvelous. Floors floated on six inches of balsam wool. Walls, doors and ceilings were double; and glue, rather than nails, held things together. It was one of the finest broadcast installations in the world.



**Leo Lassen** broadcasting from the radio booth of Sick's Stadium in 1951. (Seattle Times photo by Don Duncan.)

# FRANK McINTOSH & JBH SR



# McINTOSH AT TWIN LAKES



# BUD RAY







Dec 15-40









# BILL REUTER & W.E. 50 KW





KIRO











**John H. Dubuque**, chief engineer and popular announcer at **KXA**, Seattle in 1947. He's shown here at the control board of KXA's Bigelow Building studio, reading a "spot" announcement and preparing simultaneously to cue up a sound effect record on the near turntable.

















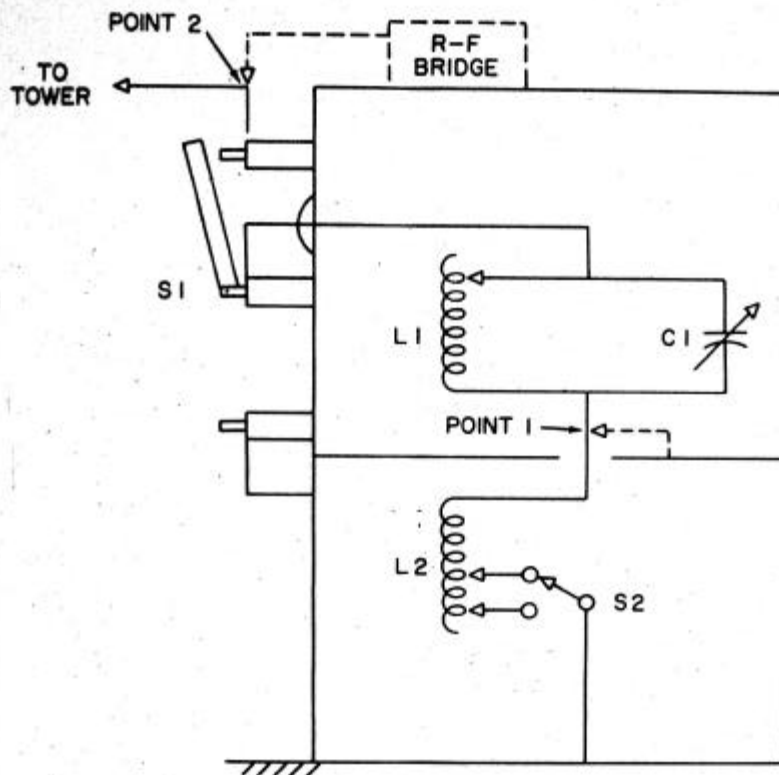






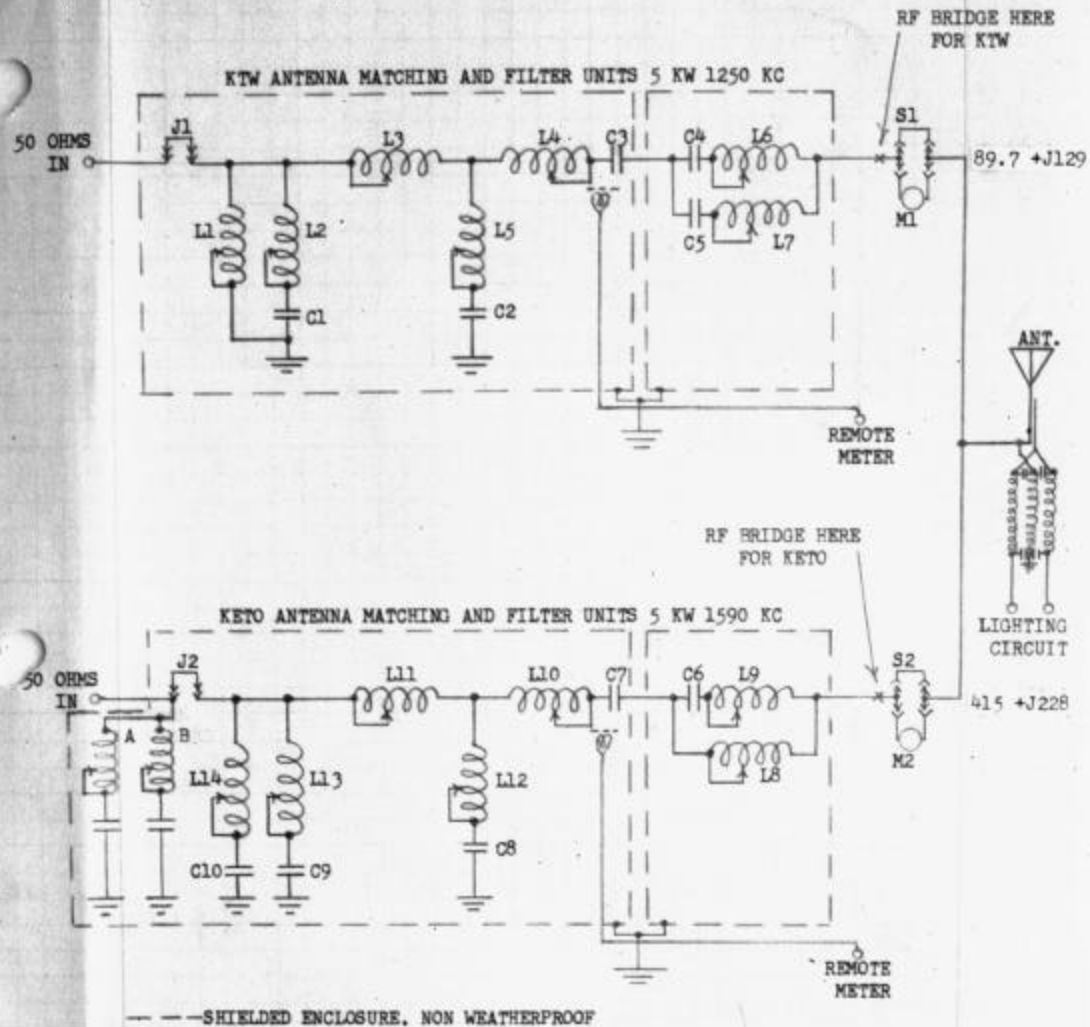
The original Channel 5 crew hamming it up in **KING-TV's** studio on Second Avenue West. From left: **Stan Carlson, Clare Hanawalt** (on ladder), **Mique Talcott, Paul Sawin, Al Miller, Dave Crockett, Tom Priebe, Tom Dargan,** and **Tom Rogstad.**

# KING - KIRO FILTER



- S 1      DISCONNECT SWITCH
- S 2      R-F CONTACTOR (IF REQUIRED)
- L 1 - C 1      710 KC ISOLATION CIRCUIT
- L 2      1090 KC DETUNE INDUCTOR

ANTENNA DIAGRAM



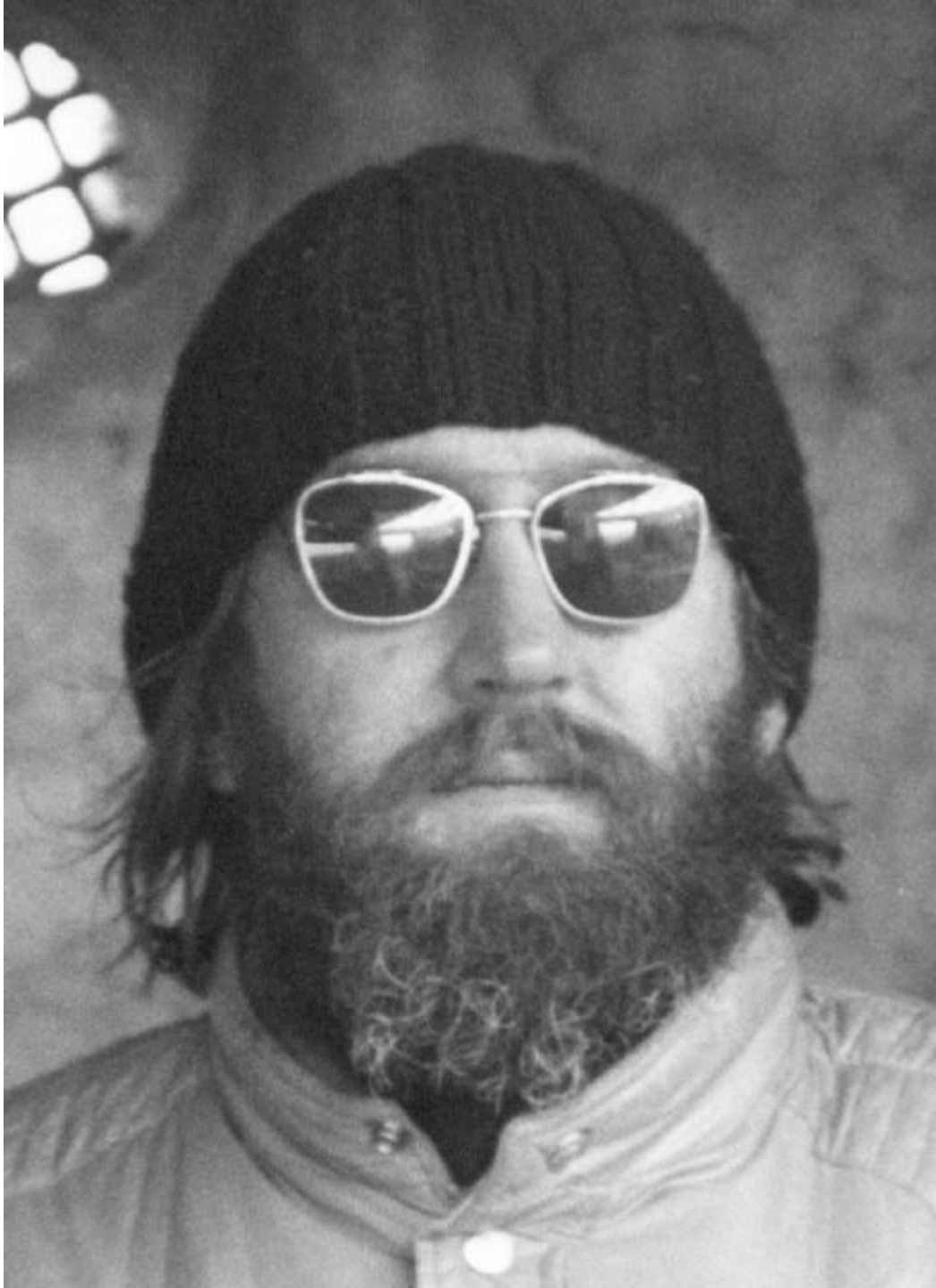
NOTE: A 2ND HARMONIC FILTER, 3180 K.C.  
 B KBLE, 1050 K.C. FILTER

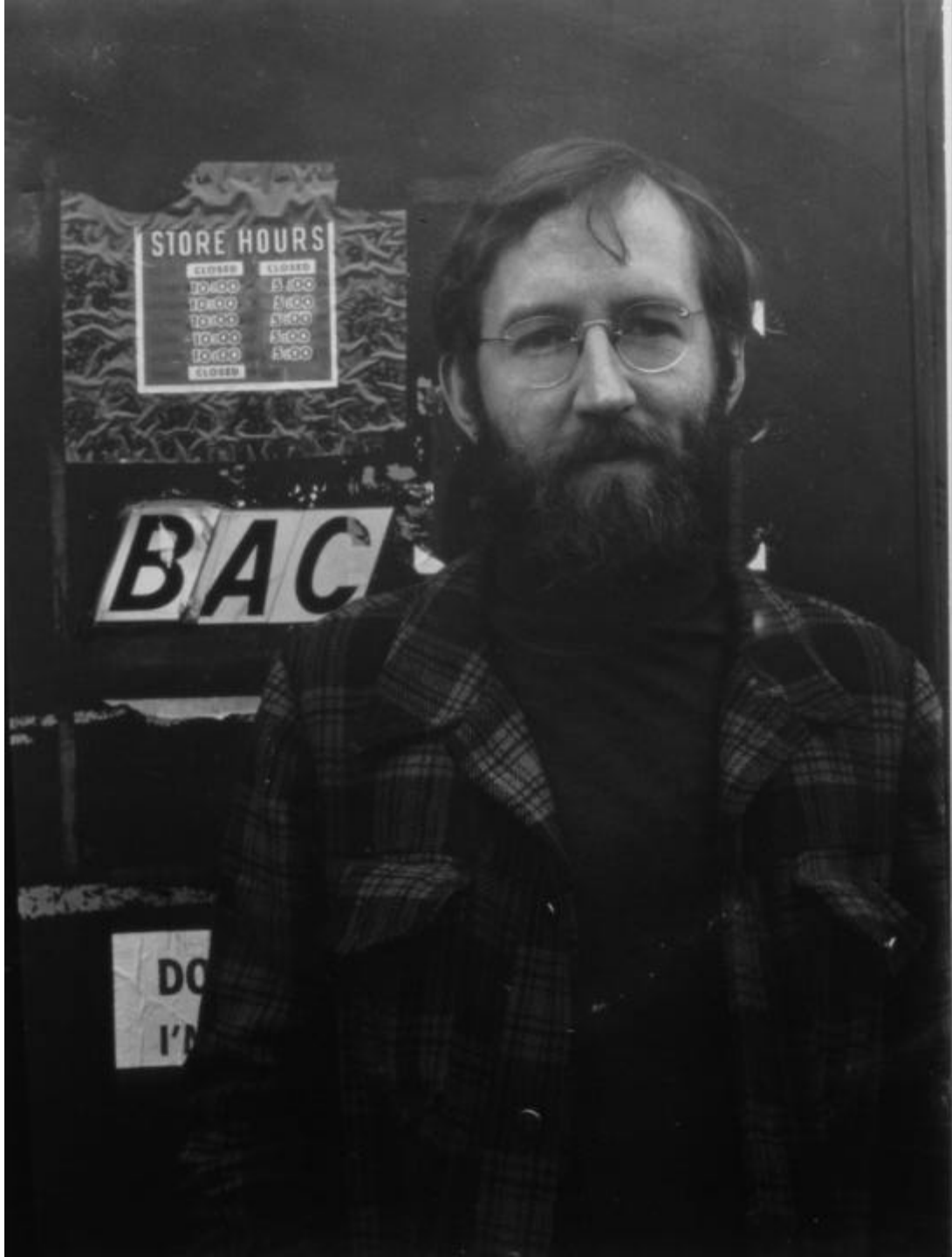
EQUIPMENT FOR COMMON ANTENNA OPERATION BY KETO AND KTW

ANTENNA ALSO SUPPORTS KTW-FM ANTENNA

DECEMBER 1964







STORE HOURS

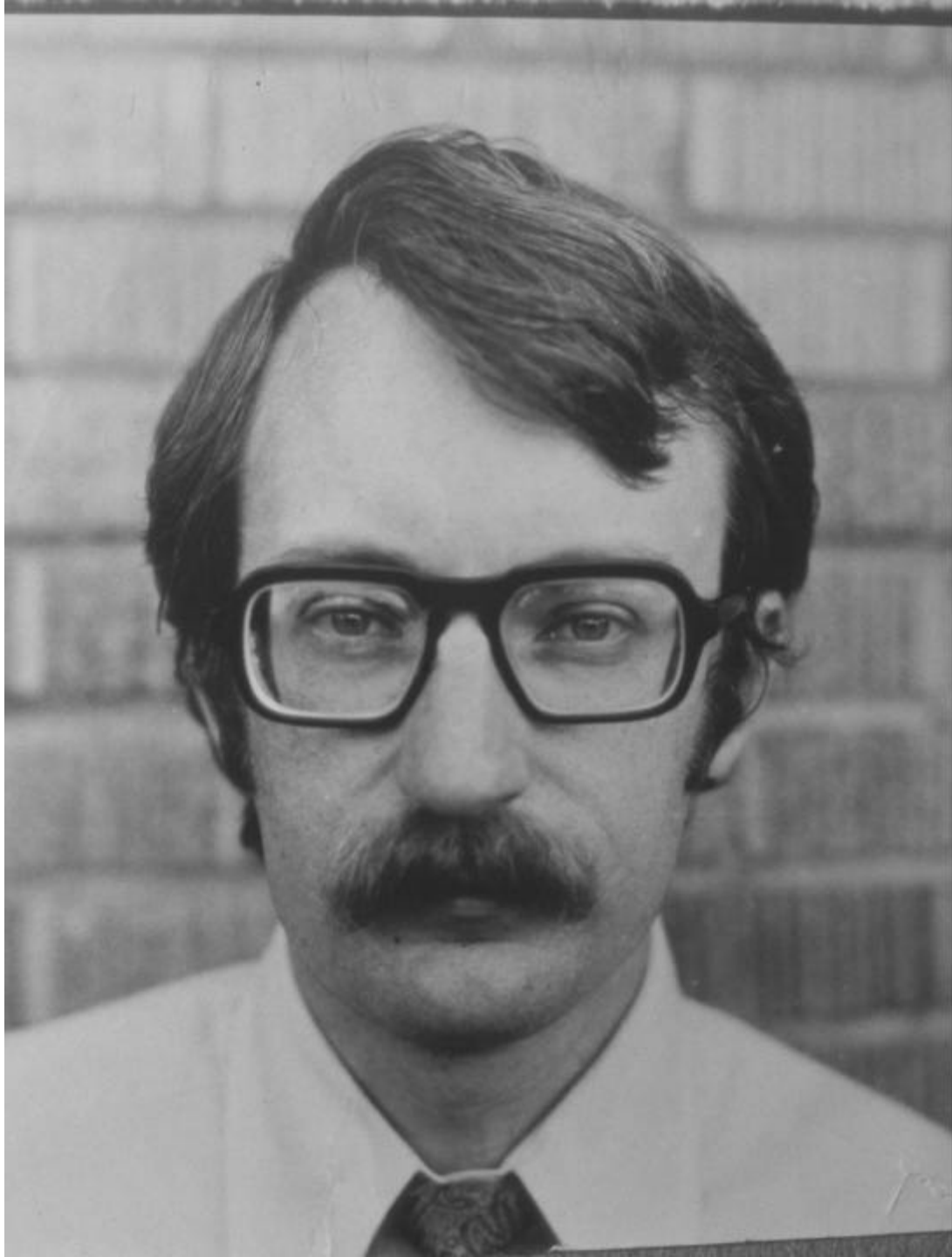
CLOSED	OPEN
10:00	5:00
10:00	5:00
10:00	5:00
10:00	5:00
10:00	5:00
10:00	5:00
CLOSED	

**BAC**

DO  
I'D

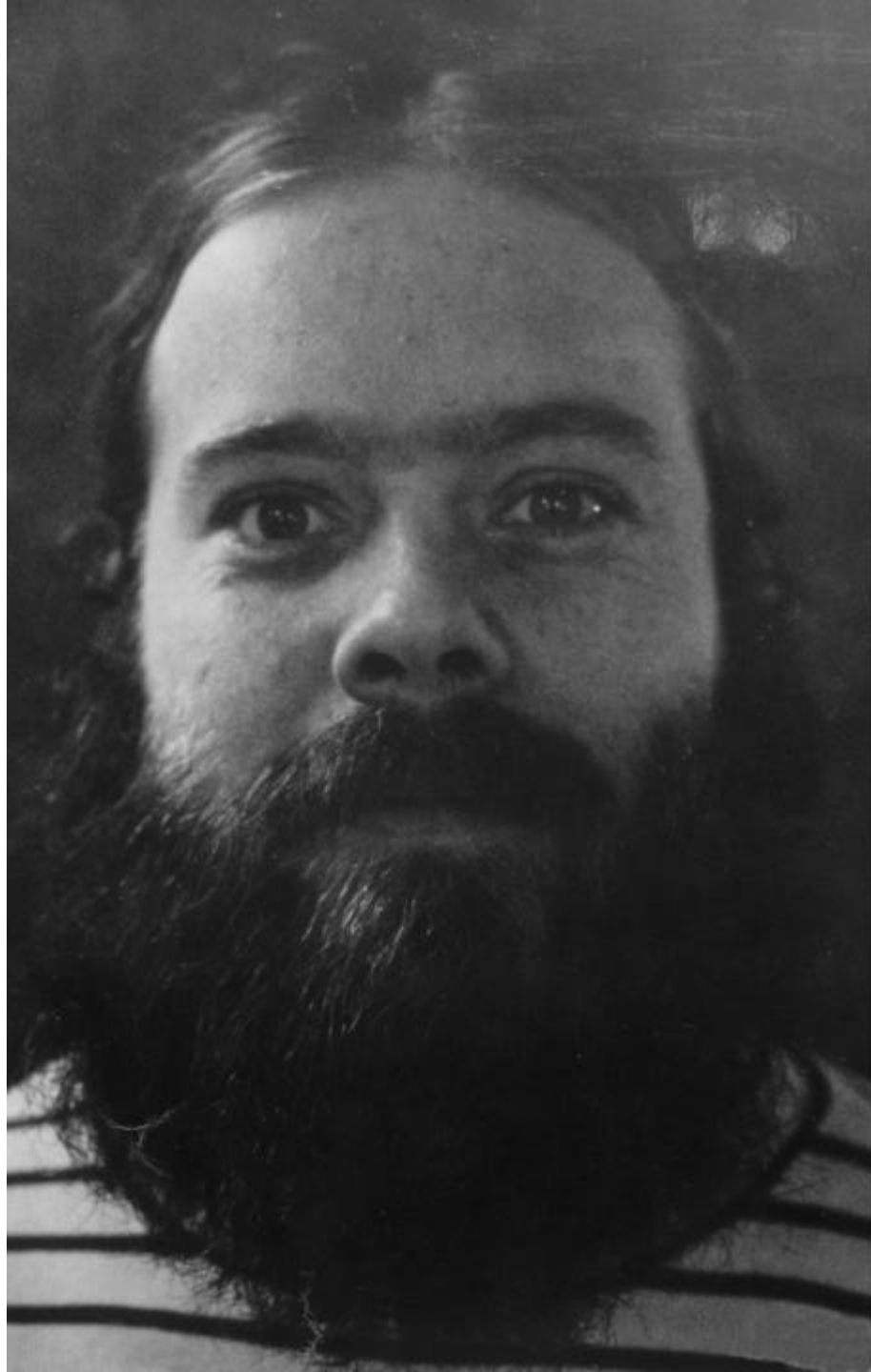








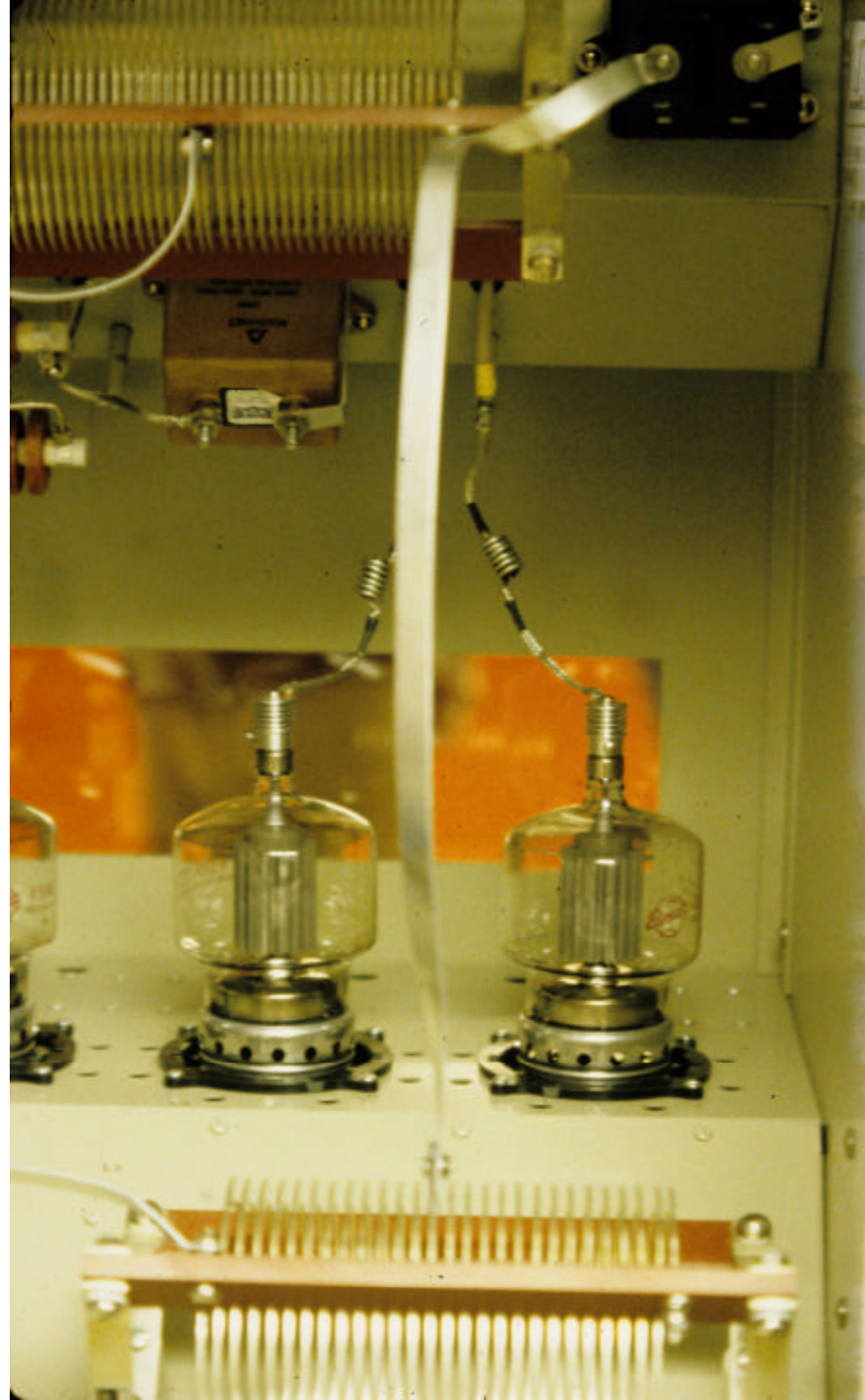




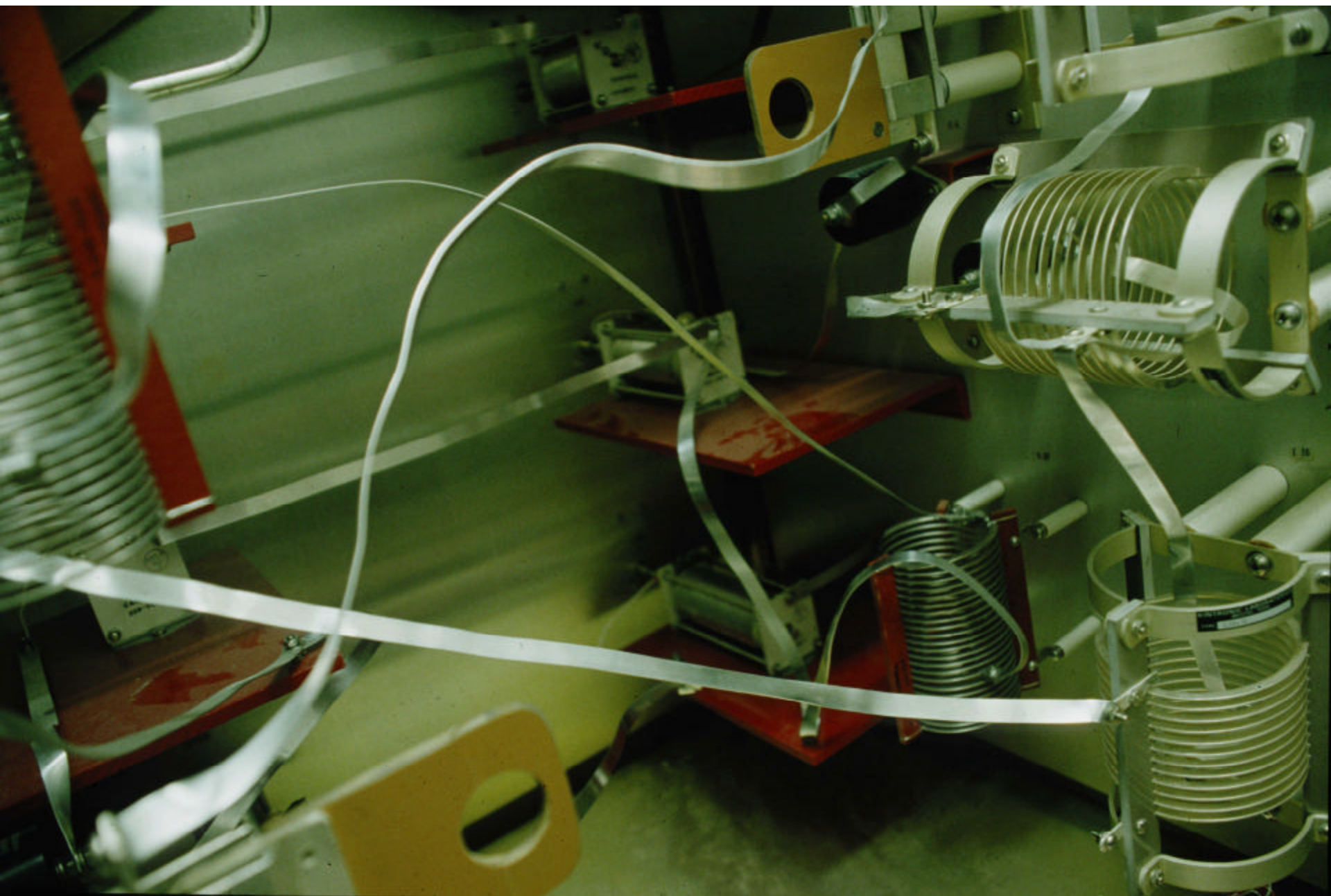


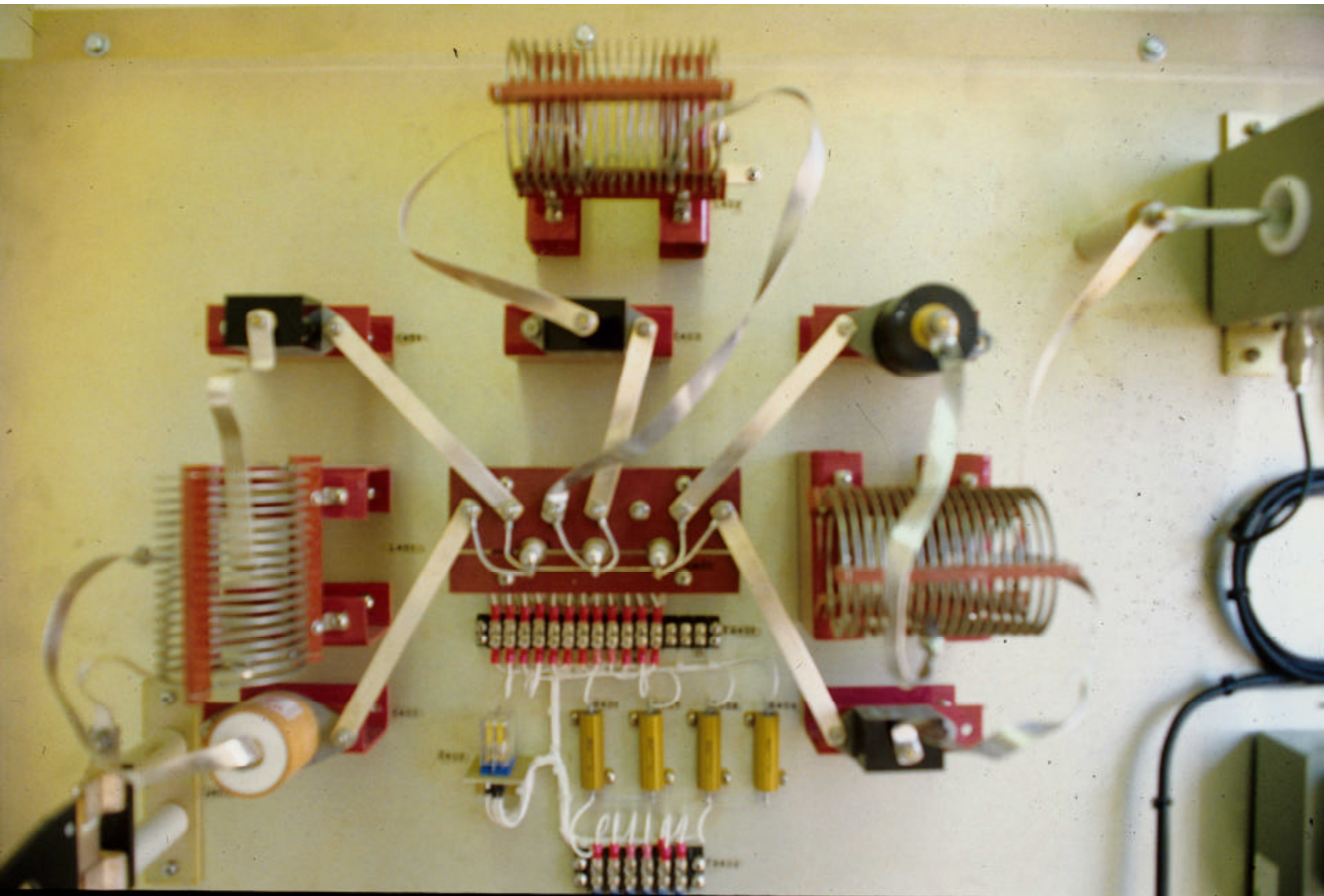












URSA MAJOR PLASTIC INSULATOR  
BOTH HALVES



